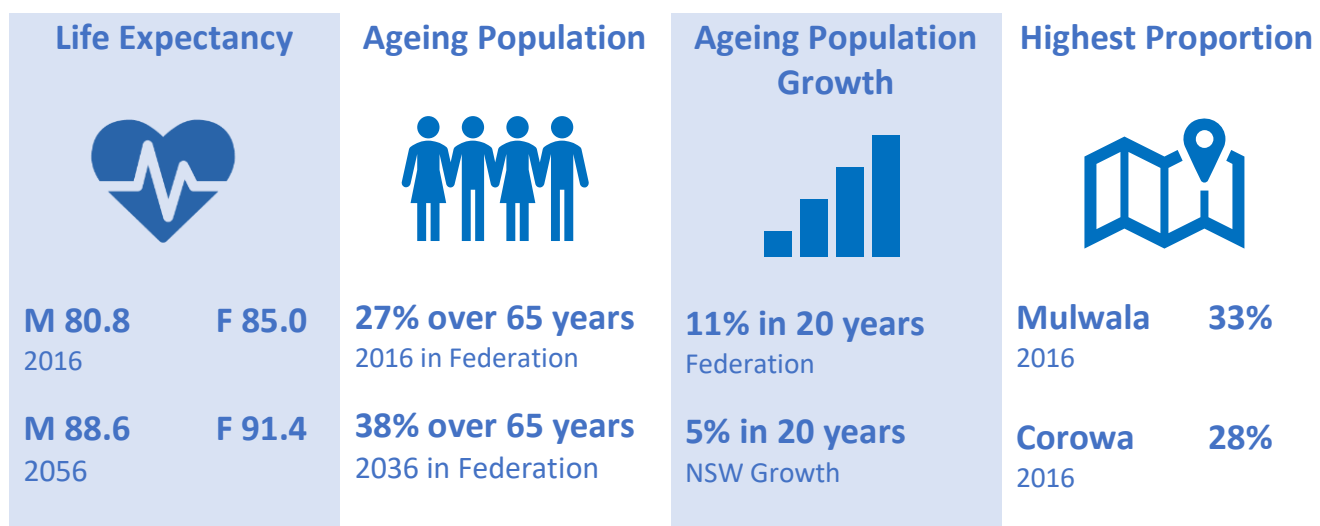




Ageing Well in Federation – Some quick facts

Did you know ...

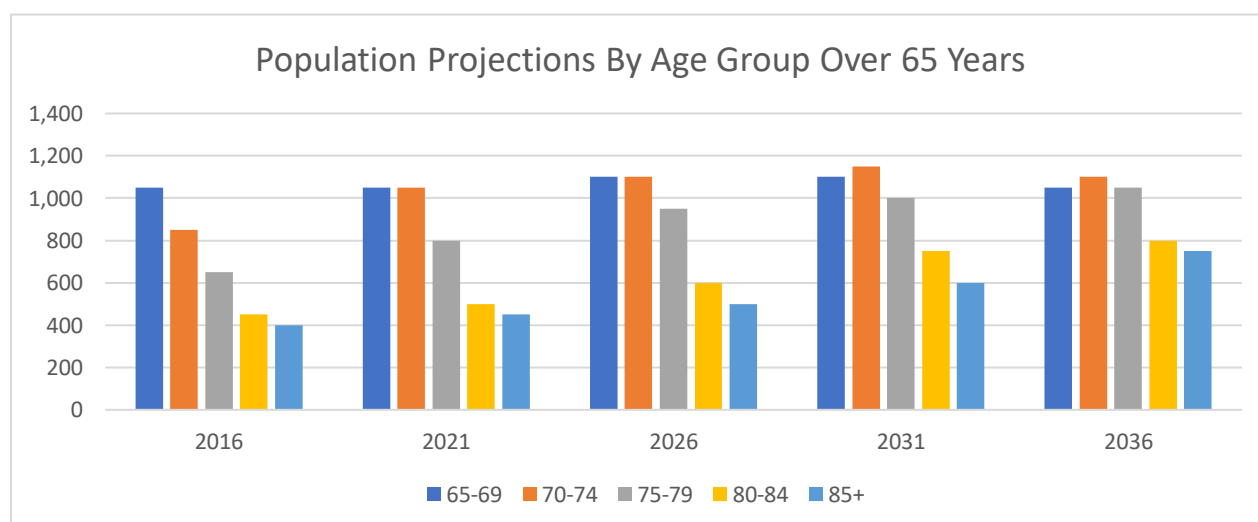
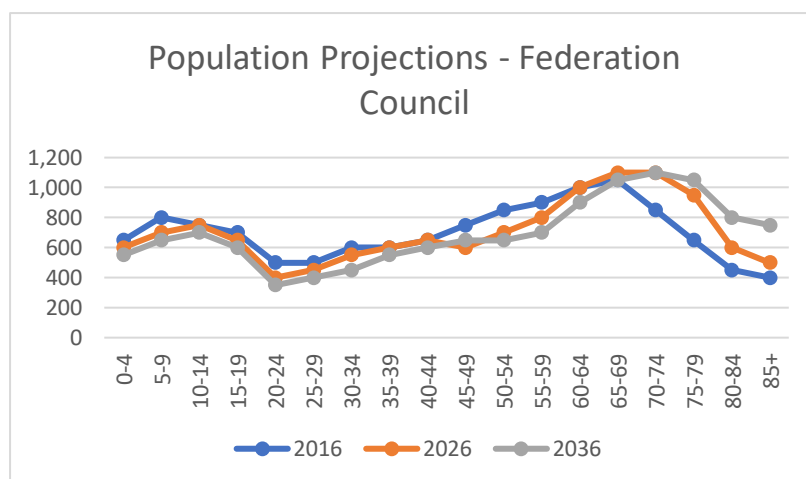
- Our populations are ageing, and we are living longer than ever before
- The ageing of our population is predicted to continue for 30 years
- The World Health Organisation predicts that by 2050 there will be more older people in the world than children for the first time in history



- Federation will grow from 3,400 people aged over 65 years in 2016, to 4,750 by 2036. Our total population is predicted to reduce by 150 people in the same period.
- Our largest growth period is 2016-2021; an increase of 450 people over aged 65 years
- Our largest growth age group are those aged 75-79 whilst the 65-69 years age group will remain constant
- The smallest proportion of people over 65 years are in our villages; Rennie (0%), Coreen (10%), Savernake (12%), and Burraja-Lowesdale (13%).

More quick facts...

- There are 37 people aged over 50 years who identify as being Aboriginal or Torres Strait Islander, 13 of these are over 65 years.
- 360 people over 65 years were born overseas however none reported having difficulty speaking English
- There is a wide spread of education levels among those over 65 years compared to their younger counterparts.
- Federation Council area experience a higher level of disadvantage than NSW with Urana township being the worst affected.
- Approximately 35% of people aged over 65 years in Federation Council have an income lower than the poverty line (<\$436 per week).
- 11% of those aged over 65 years were employed and 0.02% were looking for work (8 people)
- In 2016, 736 people over 65 years said they did volunteer work however there was a distinct drop in volunteering after 75 years of age.
- 314 people over 65 years reported providing unpaid assistance to people with a disability.
- 240 people over 65 years reported providing unpaid child care.
- 411 people over 65 years reported needing assistance in their day to day lives due to a disability (62% of all reported disabilities).



To find out more about the project:

See our website: www.federationcouncil.nsw.gov.au/Community/Seniors/Ageing-Well-Strategy

Contact the project consultant: Deanne Drage, Deanne.drage@federationcouncil.nsw.gov.au m: 0407 785 972

References: ABS Census 2016, NSW Dept. Planning and Environment 2016, NSW Population Projections