



Federation Council Standard Drawing Index

Series 000 - Street Cross Sections

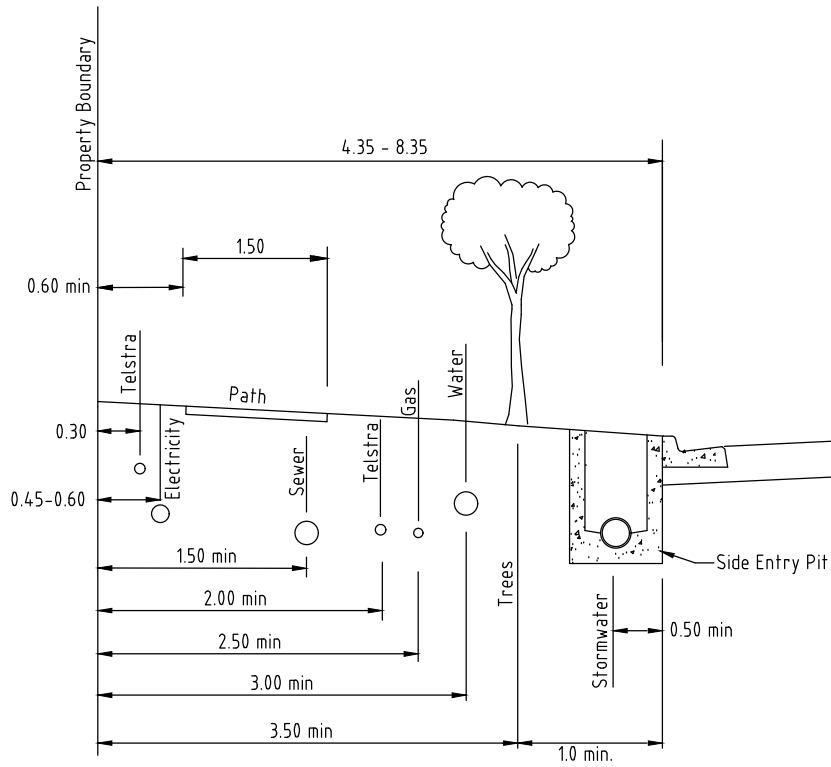
SD000 - Street Service Offsets - Telstra, Sewer, Footpaths, Gas, Water, Electricity Pole, Stormwater

SD001 - Rural & Distributor Roads - Typical Geometric Cross Section

SD002 - Residential Streets - Urban Zones - Typical Geometric Section for Collector Roads, Local Access Streets & Minor Cul-de-sacs

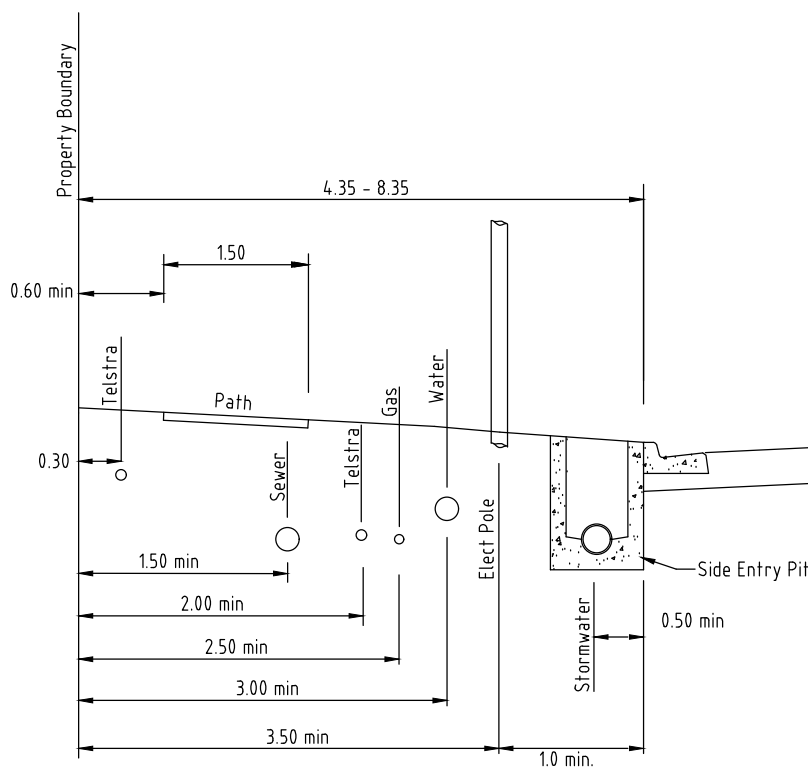
SD003 - Residential Streets - Urban Zones - Typical Geometric Cross Section for Service & Industrial Roads

SD004 - Roundabout Central Island - Typical Cross Section



Underground Power

Not to Scale



Overhead Power

Not to Scale

Subject to Council approval



Standard Drawing

LAST UPDATED: 07/12/18

FILE PATH: A4

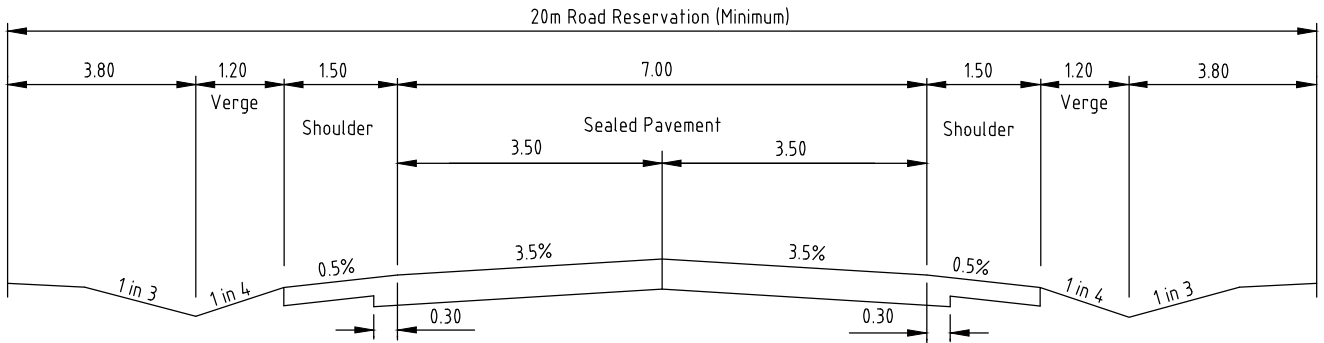
N:_Design Manual\Federation Council Standard Drawings & Development Guidelines\Standard Drawings\000 SERIES - STREET CROSS SECTIONS\000 SERIES.dwg

STREET SERVICES OFFSETS

TELSTRA, FOOTPATH, SEWER, GAS, WATER, ELECT POLE, STORM WATER

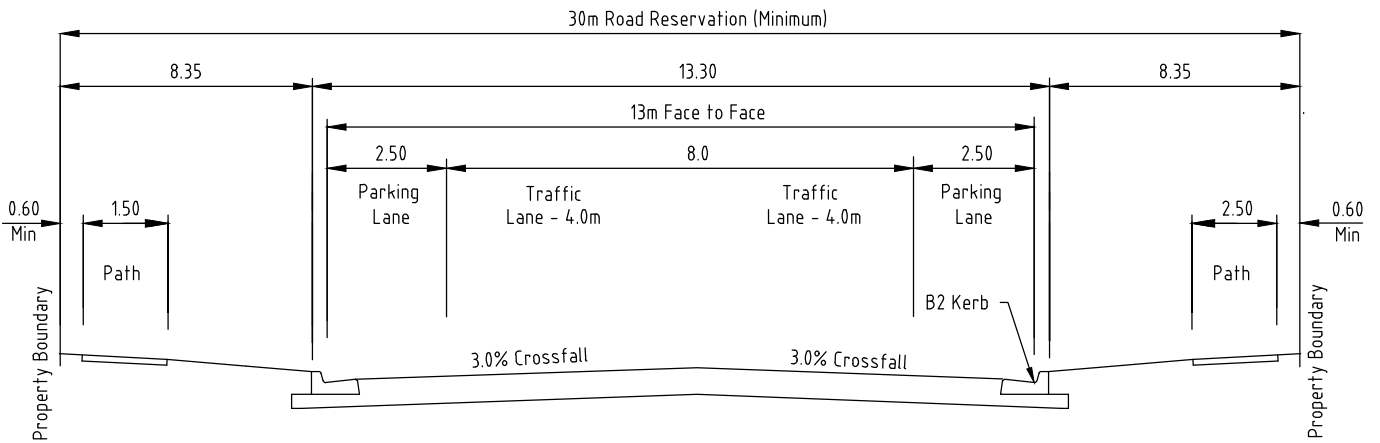
SD000

REV
A



Typical Cross Section for Rural Roads

Not to Scale



Typical Cross Section for Distributor Roads

Maximum Traffic Volume = 7000 vpd
Not to Scale



Standard Drawing

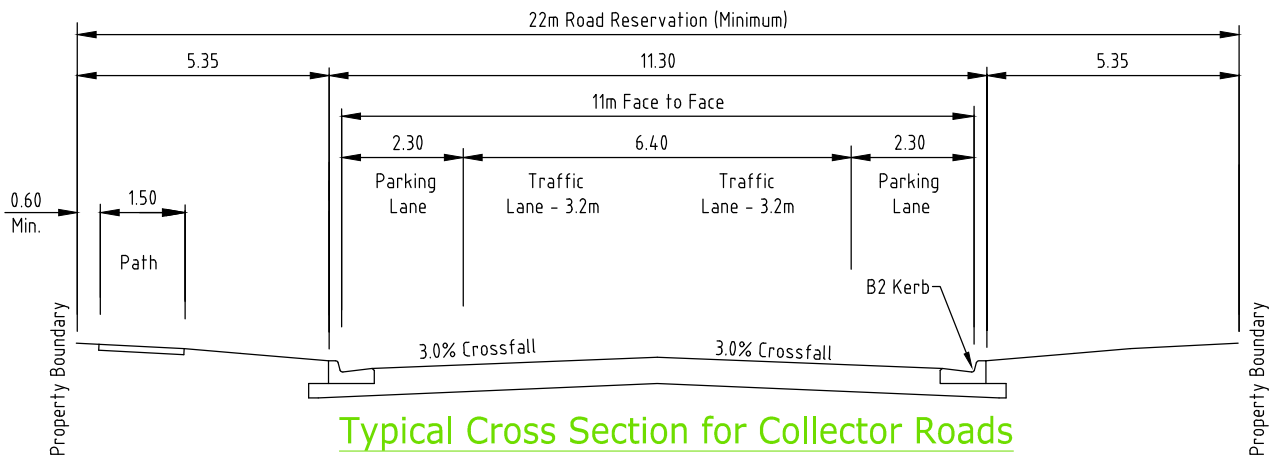
LAST UPDATED: 07/12/18

FILE PATH: A4
N:_Design Manual\Federation Council Standard Drawings & Development Guidelines\Standard Drawings\000 SERIES - STREET CROSS SECTIONS\000 SERIES.dwg

RURAL & DISTRIBUTOR ROADS
TYPICAL GEOMETRIC CROSS SECTION

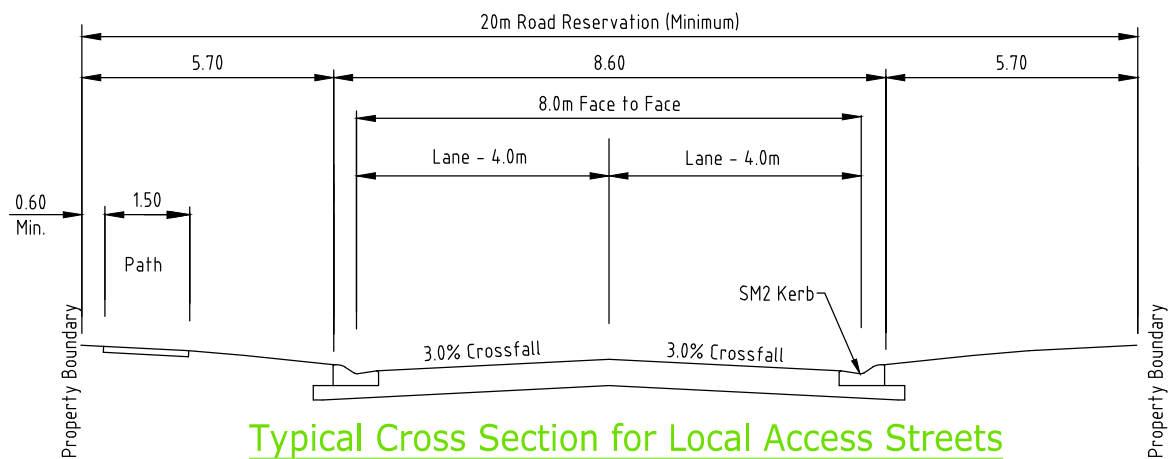
SD001

REV
A



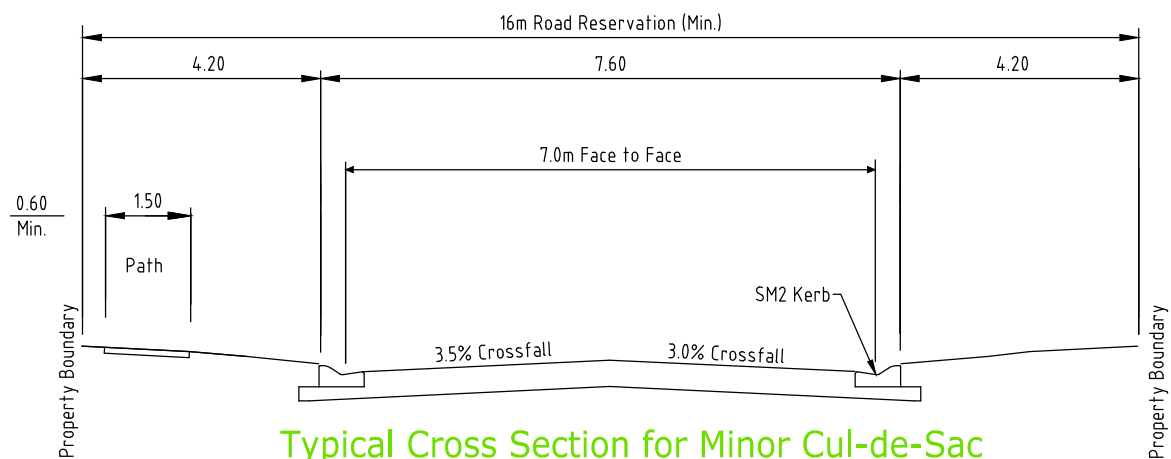
Typical Cross Section for Collector Roads

Maximum Traffic Volume = 3000 vpd
Not to Scale



Typical Cross Section for Local Access Streets

Maximum Traffic Volume = 1000 vpd
Not to Scale



Typical Cross Section for Minor Cul-de-Sac

Maximum Traffic Volume = 150 vpd
Not to Scale



Standard Drawing

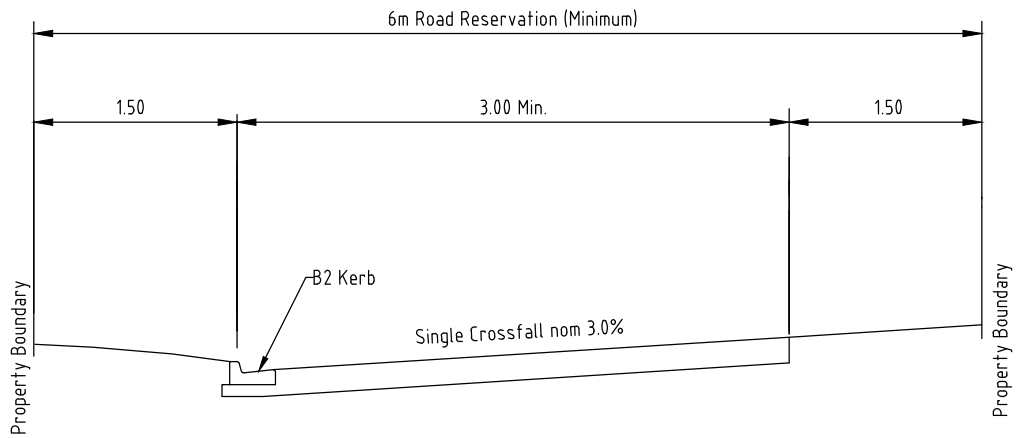
LAST UPDATED: 07/12/18

FILE PATH: A4
N:_Design Manual\Federation Council Standard Drawings & Development Guidelines\Standard Drawings\000 SERIES - STREET CROSS SECTIONS\000 SERIES.dwg

RESIDENTIAL STREETS- URBAN ZONES
TYPICAL GEOMETRIC CROSS SECTION FOR COLLECTOR ROADS, LOCAL ACCESS STREETS & MINOR CUL-DE-SACS

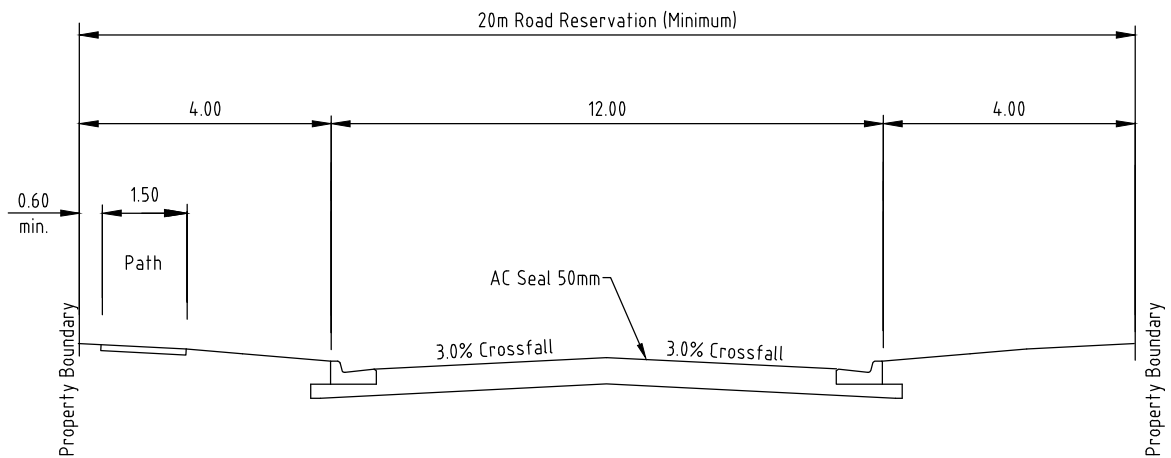
SD002

REV
A



Typical Cross Section For Laneway

Maximum Traffic Volume = 100 vpd
 Not to Scale
 Subject to Council Approval



Typical Cross Section For Industrial or Commercial Road

Not to Scale



Standard Drawing

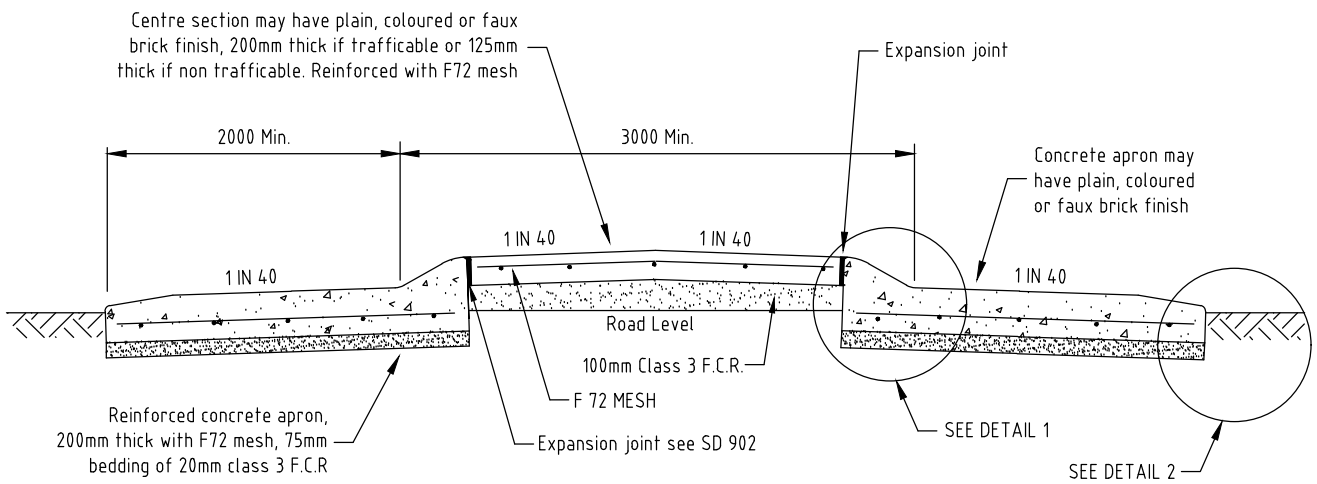
LAST UPDATED: 07/12/18

FILE PATH: A4
 N:_Design Manual\Federation Council Standard Drawings & Development Guidelines\Standard Drawings\000 SERIES - STREET CROSS SECTIONS\000 SERIES.dwg

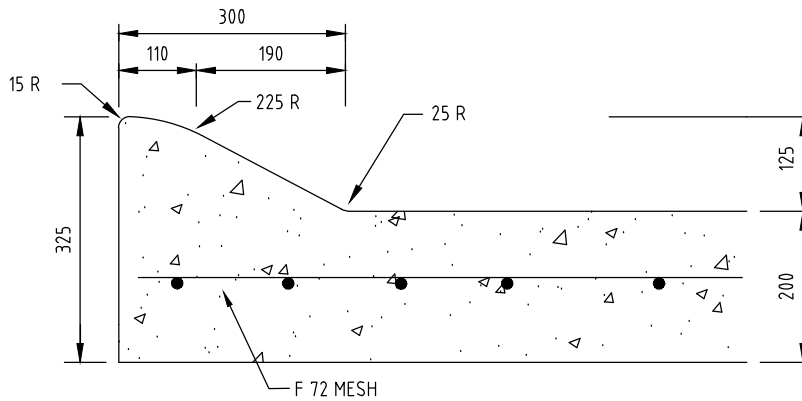
RESIDENTIAL STREETS - URBAN ZONES
 TYPICAL GEOMETRIC CROSS SECTION FOR SERVICE & INDUSTRIAL ROADS

SD003

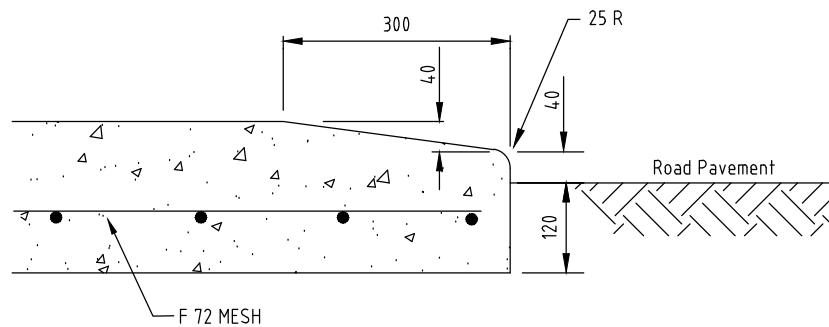
REV
 A



Typical Section
Not to Scale



Detail 1



Detail 2

NOTES:

1. Minimum reinforcing cover - 50mm.
2. Concrete compressive strength of 25MPa.
3. Concrete compressive strength of 30MPa if coloured concrete is used.
4. Faux brick colour to be approved by council.



Standard Drawing

LAST UPDATED: 07/12/18

FILE PATH: A4
N:_Design Manual\Federation Council Standard Drawings & Development Guidelines\Standard Drawings\000 SERIES - STREET CROSS SECTIONS\000 SERIES.dwg

ROUNDBABOUT CENTRAL ISLAND
TYPICAL CROSS SECTION

SD004

REV
A