

Regional Drought Resilience Planning

Fact sheet

In response to environmental challenges, the Southern Riverina LGA's (Berrigan Shire, Federation, Edward River, and Murray River) are working on the development of a Regional Drought Resilience Plan.

This plan aims to identify innovative approaches to address the impacts of drought. Given the region's vital role as one of Australia's highest-producing areas for agricultural staples, it is a key priority to ensure that these communities are well equipped to face the challenges of drought and climate vulnerability.

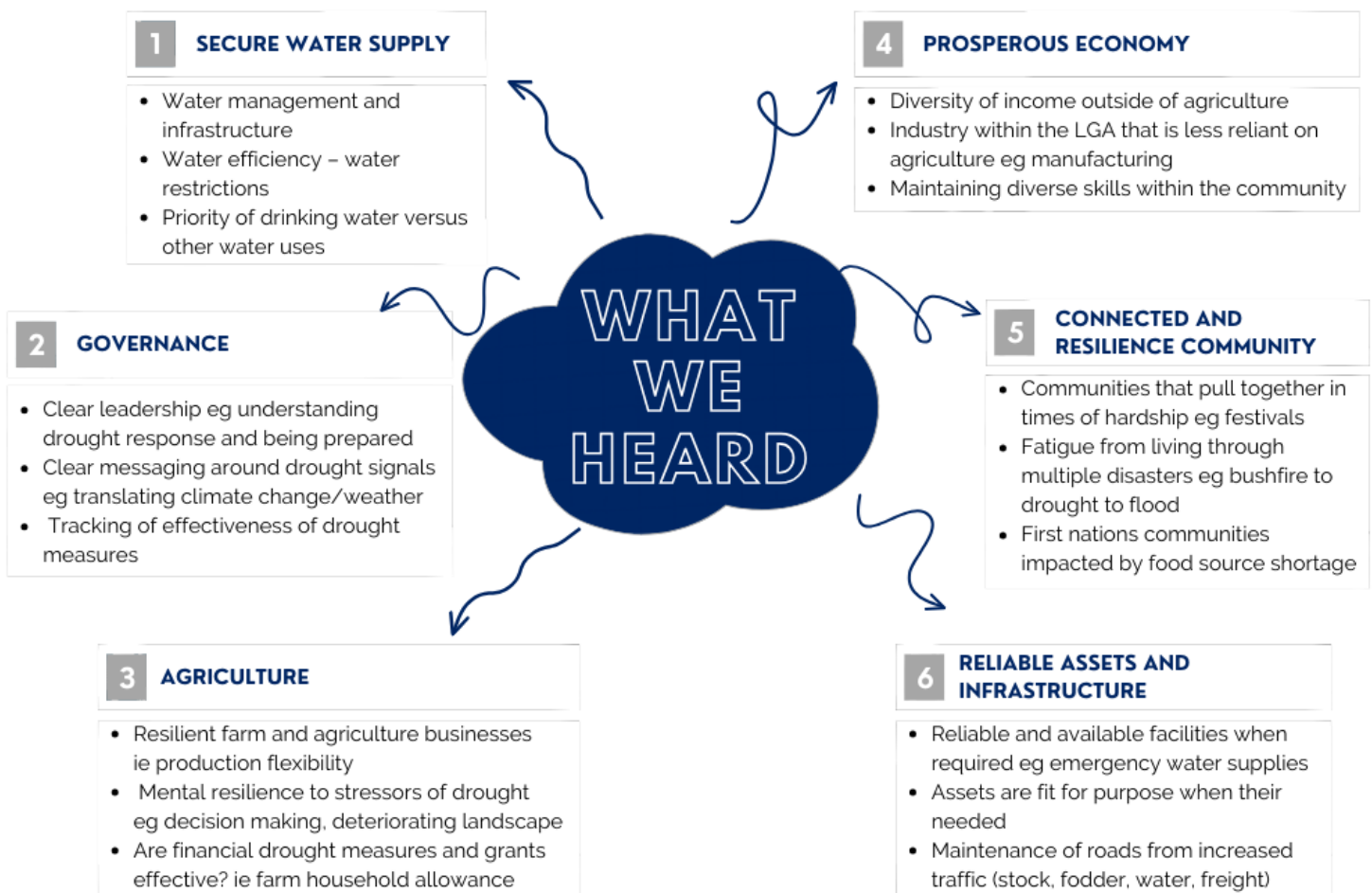
The Southern Riverina region has historically been a stronghold of wool and grain production as well as lamb and beef-cattle farming. It has also faced the relentless challenges of climate variability including droughts.

Drought resilience is not just about water; it's about safeguarding the livelihoods, well-being, and future of our communities. The devastating impact of past droughts reinforces the urgency of long-term planning. This plan will mitigate the impacts of drought, support economic growth, and ensure a sustainable future for this agricultural hub.

To ensure agricultural viability and continued economic growth, we need to understand the need for proactive planning.

What we heard on this journey so far

Drought is an ongoing conversation in the region, and we acknowledge that this isn't the first time the community has been asked for feedback



Regional Drought Resilience Planning

Fact sheet

NEXT STEPS

How can we unlock what's "Beyond the Farm Gate"

Drought resilience extends **beyond the farm gate**. Our approach to everything that we do focusses on four foundational pillars that shape our region:

BEYOND THE FARM GATE

Understanding drought impacts on people, place and prosperity



TOWN VITALITY & SERVICE PROVISION

Encouraging collective action during challenging times, fostering a strong sense of community, promoting festivals and gatherings, and supporting community bonds.



INVESTOR CONFIDENCE & SUSTAINMENT

Encouraging economic diversification beyond agriculture, creating economic stability, reducing vulnerability to drought-induced economic downturns, and supporting local industries.



INDIVIDUAL & COMMUNITY WELLBEING

Enhancing the mental and physical health of community members, addressing fatigue resulting from persistent disasters, and promoting overall well-being within the community.









ECOLOGICAL & LANDSCAPE SYSTEMS HEALTH

Aiming to restore and protect the environment, ensuring that the region's natural assets are preserved for future generations and maintaining connections to First Nations land and culture.



Come and chat to us in person at these locations in October:

-  Urana Bowling Club - 7 October 2023 between 2pm and 6pm
-  Corowa Show - 8 October 2023 All day event
-  Finley RSL Club - 9 October 2023 between 1pm and 6 pm
-  Tocumwal Golf and Bowls Club - 10 October 2023 between 1pm and 6 pm
-  Wakool and District Services Memorial Sports Club - 11 October 2023 between 1pm and 6 pm
-  Barham Riverside Park - 12 October 2023 between 10am and 4pm
-  Moulamein Bowling Club - 13 October 2023 between 1pm and 6 pm
-  Naponda Farmers Market - 14 October 2023 between 8:30am and 12:30pm

How can I give feedback?

Scan the QR code and complete our short survey.

You can contact us on 1800 810 680 or at

community.input@ghd.com



What we'll do with your input

Your valuable input will shape the RDRP and guide the development of strategies to build resilience within our communities. Together, we can create a plan that truly reflects the Southern Riverina's unique circumstances and goals, fostering a sense of ownership and commitment among our communities.

The Southern Riverina Drought Resilience Planning Project aims to empower our region to withstand droughts, seize opportunities, and thrive, well beyond the farm gate.